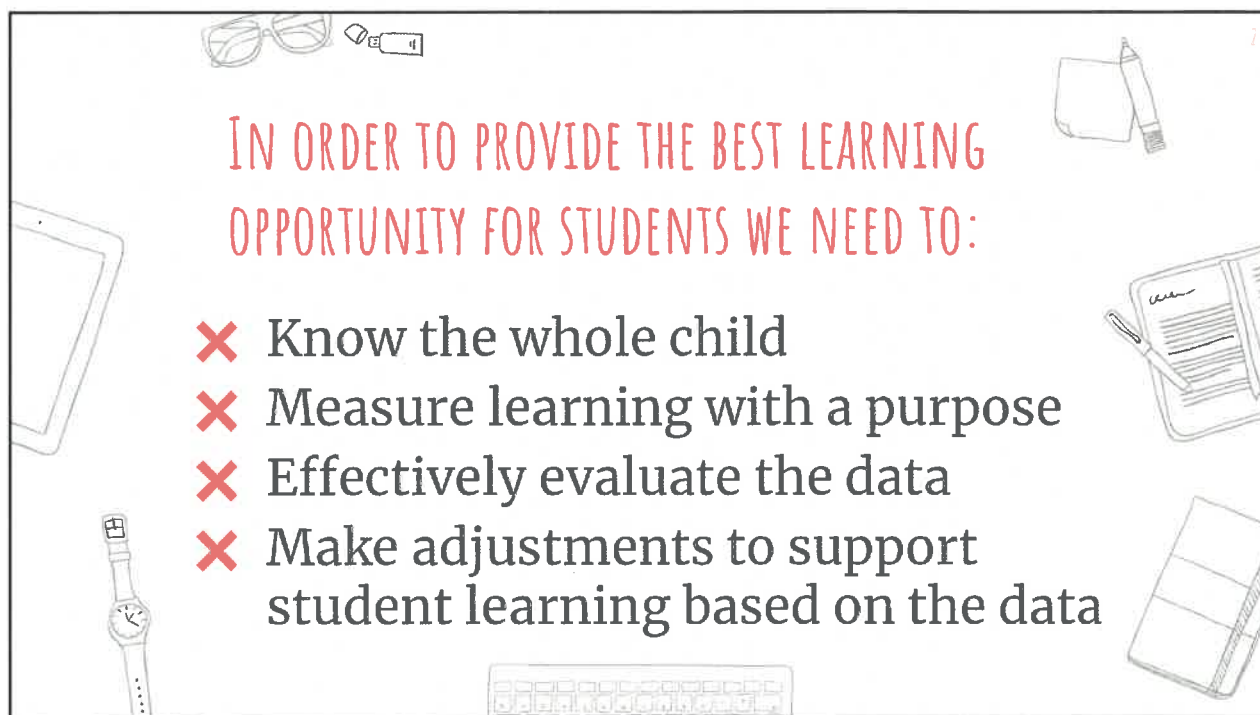
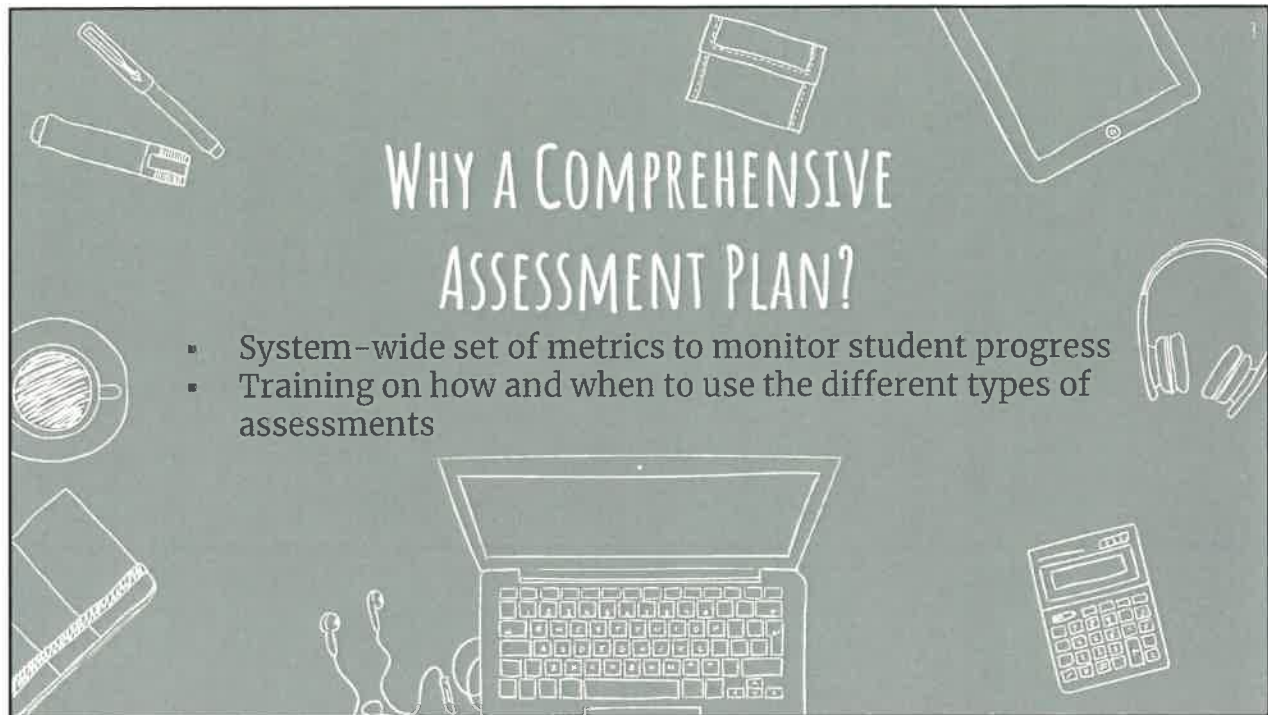


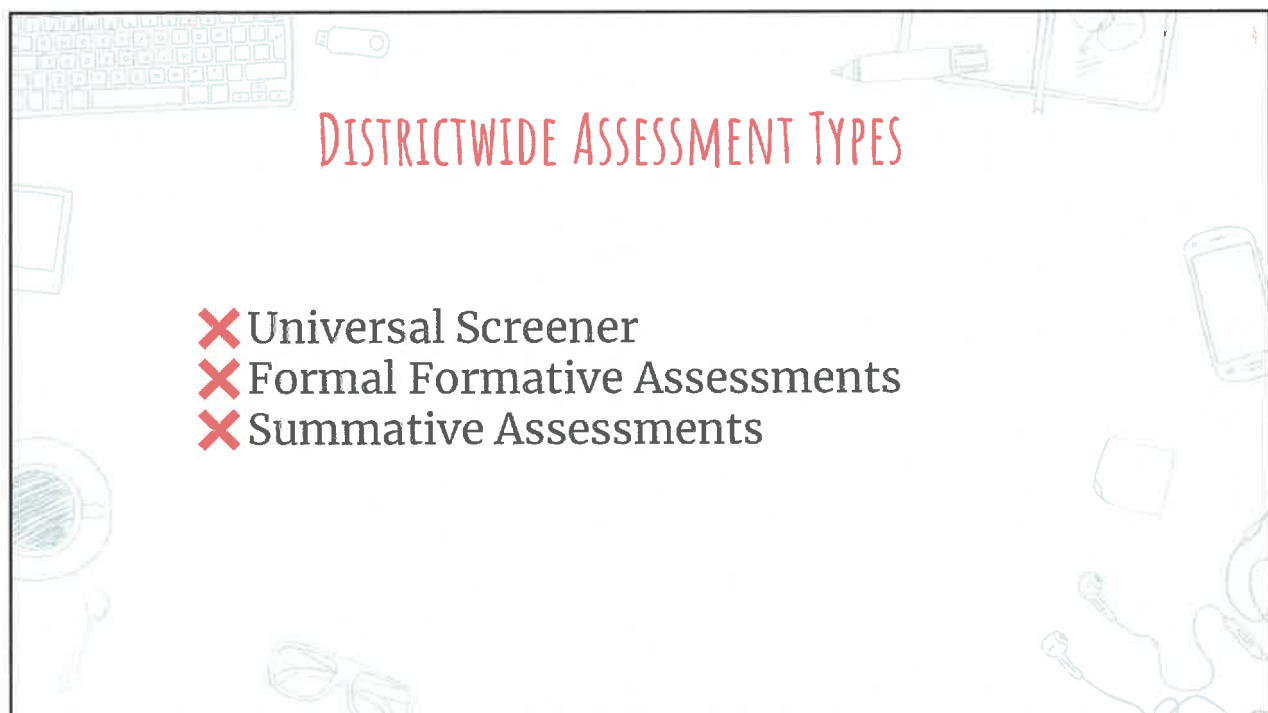
1



2



3



4

WHAT IS A UNIVERSAL SCREENER?

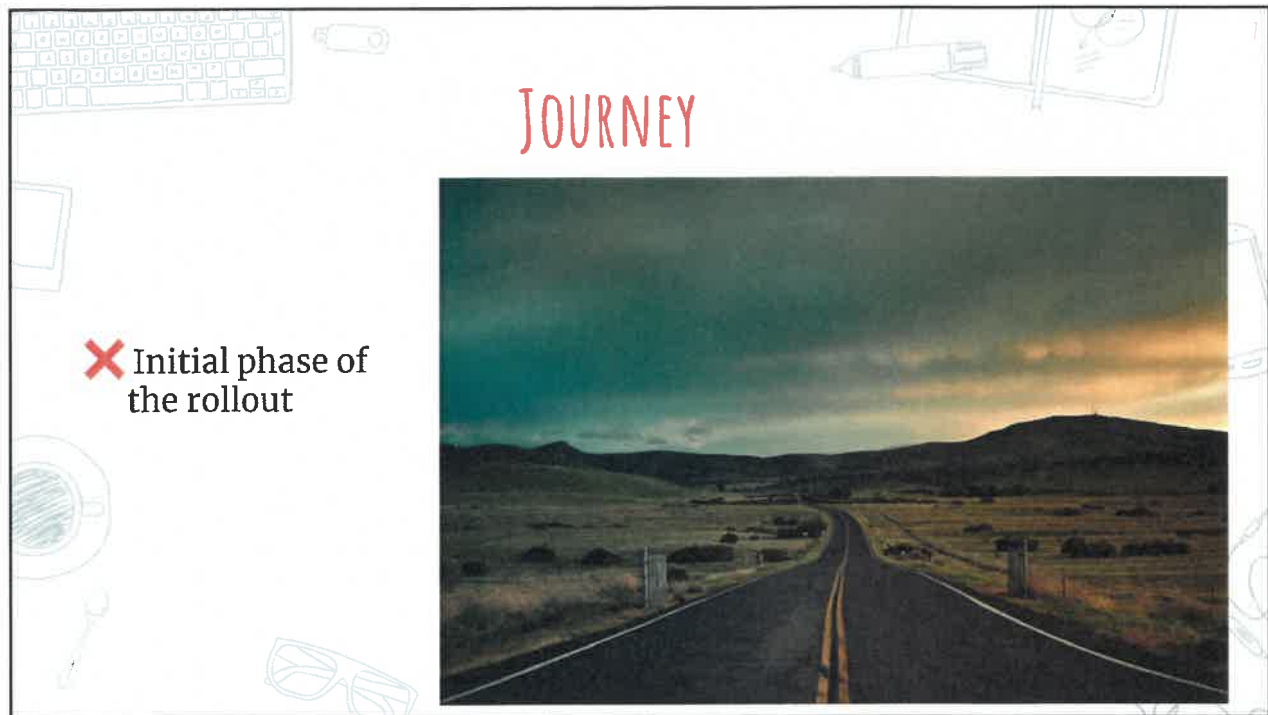
- ✗ An assessment to measure specific skills and/or behaviors
 - Reading
 - Math
 - Social Emotional
- ✗ Predictive of future results
- ✗ Identifies learners who may need additional diagnosis and/or interventions

5

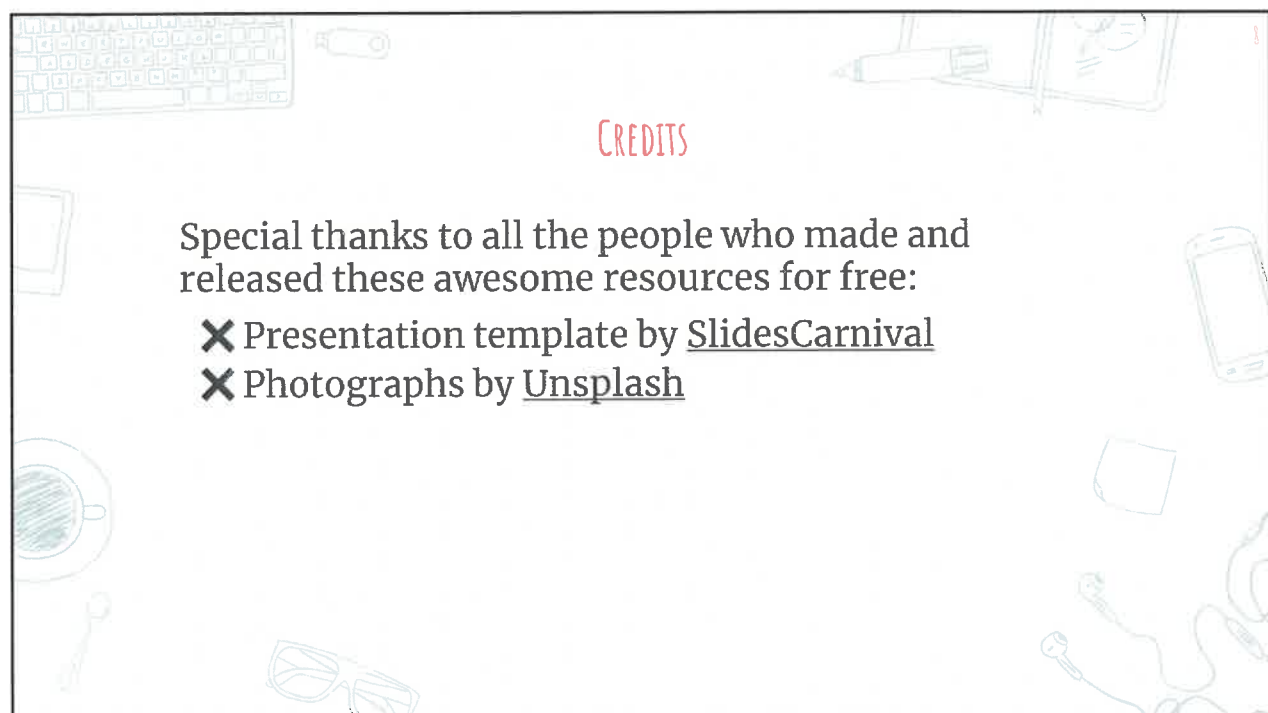
FASTBRIDGE

- ✗ Assessment system that provides a Universal Screener
- ✗ Available TK – 12
- ✗ Assesses Reading, Math and Social Emotional Learning
 - Provides Lexile score which is part of reclassification process
- ✗ Provides resources for teachers and administrators to provide targeted interventions for students

6



7



8